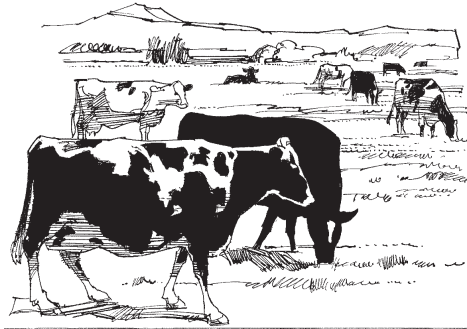


# teatease<sup>®</sup> udder cream



**ENGINEERED TO MAINTAIN “UDDER HEALTH”**

Teatease<sup>®</sup> is registered under the ACVM act 1997. No A006112.

## TEATEASE<sup>®</sup> PRODUCT INFORMATION



animal health direct ltd

unit 3 | 27 napier road | p o box 8015 | havelock north | t 06 877 3201 | f 06 877 3205

e sales@ahdLtd.co.nz | www.ahdLtd.co.nz

# 1. INTRODUCTION

TEATEASE® represents the next step for AHD Ltd in reinforcing its position in the dairy market. Over the past two years this company has progressively introduced products used extensively in the dairy market. Amongst these are; Over the Moon - Calcium Based Energy Drench recognized as a brand leader in this market segment, Antiseptic Lube, Stock Iodine 2.5% and 10%, Iodine Tincture spray 2.5% and 10%, Varicide and Vetacide disinfectant, Calf Oral Electrolytes, Swipes, Sel-Health 5% Selenium Oral Drench, and the third party distribution of Minject and Calject and new Vet Only range of metabolics.

In 2006 AHD Ltd introduces a recognised and respected brand of “udder cream” - TEATEASE® which the company purchased in late 2005.

TEATEASE® formulation provides the dairy farmer with a unique proven chemically complex “udder cream” with potent antiseptic properties against gram negative and gram positive bacteria.

## KEY FEATURES OF TEATEASE®

- Odourless
- Non-tainting
- Antiseptic properties – restricts bacteria growth
- Heals cracked teats
- Helps prevent mastitis in affected areas
- Soothing emollient action
- Promotes healing of minor cuts and abrasions
- Non lanolin base
- Disinfects hands and arms

TEATEASE® will strengthen AHD Ltd’s presence in the dairy market and the brand will quickly become the brand leader in the “udder cream” market segment with its chemically complex formulation that out performs the shortcomings of other similar products in the market.

## 2. FORMULATION NAME

GML 73 0.08% by weight of Chlorhexidine digluconate. White Petroleum oil.

TEATEASE® is formulated in such a way that the antiseptic/disinfectant remains effective against gram negative and gram positive bacteria.

- **WITHOLDING TIME**

Milk = Nil. Meat = Nil. Residues = Nil

- **SAFETY PRECAUTIONS**

Store in original container, avoid contact with eyes.

- **STORAGE**

Store in original containers, avoid contamination of any kind. Keep away from direct sunlight, avoid temperatures above 40\*c

- **PACKAGING**

3.5kg, 9kg and 20 kg containers

- **TREATMENT**

Per pack size:

3.5 kg = 100 cows twice daily for 1 month

10 kg = 285 cows twice daily for 1 month

20 kg = 571 cows twice daily for 1 month

*Note: Number of cows treated over one month period is an estimate based on recommended application rate. This will vary due to cow udder size and extraction method from the container by the applicator.*

- **ADMINISTRATION**

Applied by hand directly onto udder and teats. Benefits: Encourages inspection on a daily basis reducing the risk of a Mastitis\* outbreak (Inflammation of the udder) TEATEASE® is also registered for the use in milking goats

### 3. MASTITIS\*

Caused by a variety of different bacteria or germs. Clotted milk is always nearly the first sign.

Practically all cowshed floors are reservoirs of infection. Mastitis germs are present on the surface of the skin of the udder and teats, in fact one of the germs involved, the staphylococcus, actually multiplies and grows there. Many more germs are already inside the udder waiting for their chance to multiply and produce Mastitis. They get that chance when the udder tissue is damaged in any way. This stresses the need for daily inspection of the udders and teats.

Another source of infection can be dirty teat cup liners. They accumulate skin fat and dried milk fat both of which can harbour germs in the invisible cracks in the rubber.

Because of the above mentioned factors that cause Mastitis it is vital to apply the recommended amount of a reliable udder cream such as TEATEASE® that has effective action against the Mastitis causing bacteria and germs.

**Spray treatments with no inspection process is a risky method of control!**

- **HOW DO YOU KNOW IF A COW HAS AN UDDER OR TEAT PROBLEM?**

Look for these signs: Restless, Stamping, and Kicking, always bellowing.

- **CONDITIONS AFFECTING THE MILK YEILD OF COWS ARE;**

Breed, temperament, health, age, lactation, period of year, oestrus, food, soils, water supply, temperature and treatment.

- **HAS TEATEASE® BEEN TRIALLED?**

Yes, six months trial with the DSIR, MAF and Ruakura diary unit

## **4. LABELLING INFORMATION**

- For treatment of cracked teats, helps with prevention of mastitis in affected teats
- For treatment of minor wound infections in animals
- For disinfection of hands and arms
- Soothing emollient action, keeps teats soft and pliant
- Helps promote healing of minor cuts and abrasions
- Antiseptic action restricts bacterial growth during healing

### **DIRECTIONS**

- For sore and cracked teats apply after milking
- For wounds on animals, clean wound then apply cream, repeat daily
- Disinfecting hands and arms, wash area and then rub cream gently into skin
- Ensure all residues are washed from teats and udders prior to milking
- Active ingredient(s) 0.5% w/w cetrimide BP, (0.1%w/w chlorhexidine digluconate BP)
- Do not store in direct sunlight
- Use before date shown.

### **MANUFACTURING**

Contract manufactured for AHD Ltd by Veterinary Remedies, Palmerston North.

Veterinary Remedies complies with the ACVM Standard for Good Manufacturing of veterinary medicinal products. Certificate number NZ/026V/2002 issued by New Zealand Food and Safety Authority.