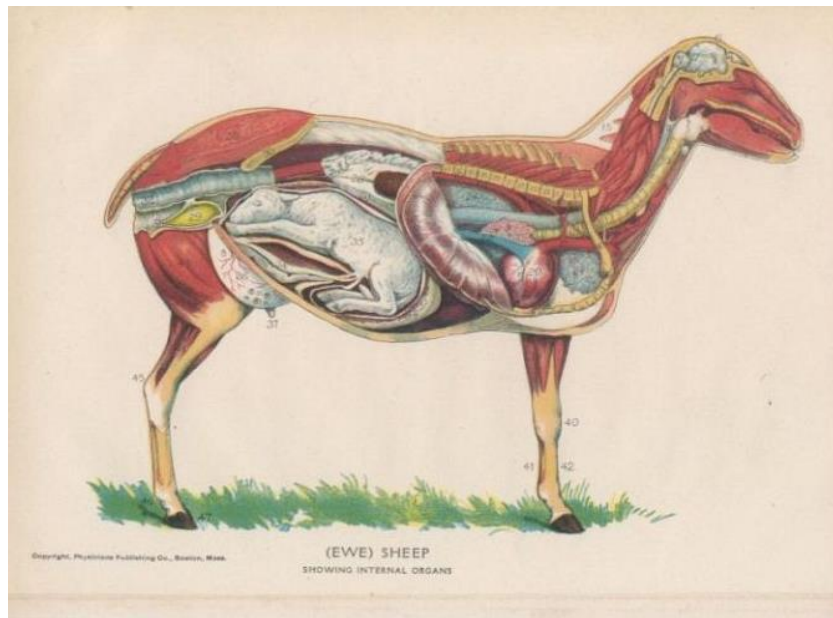
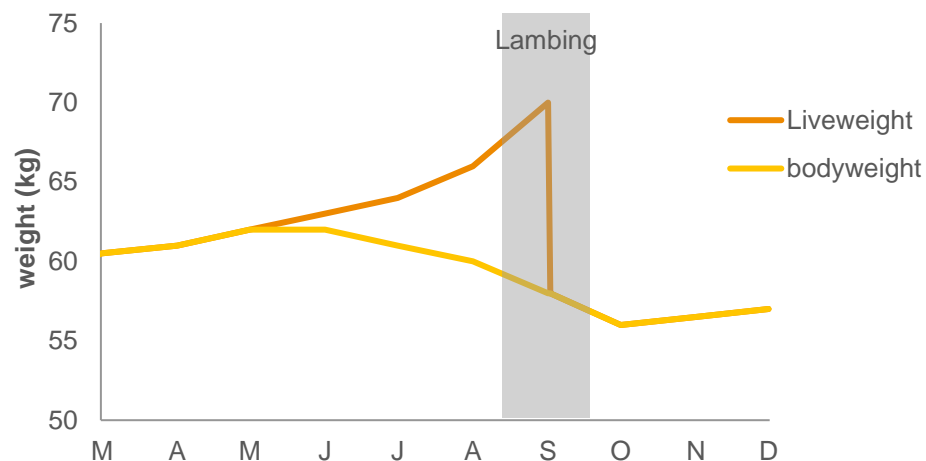


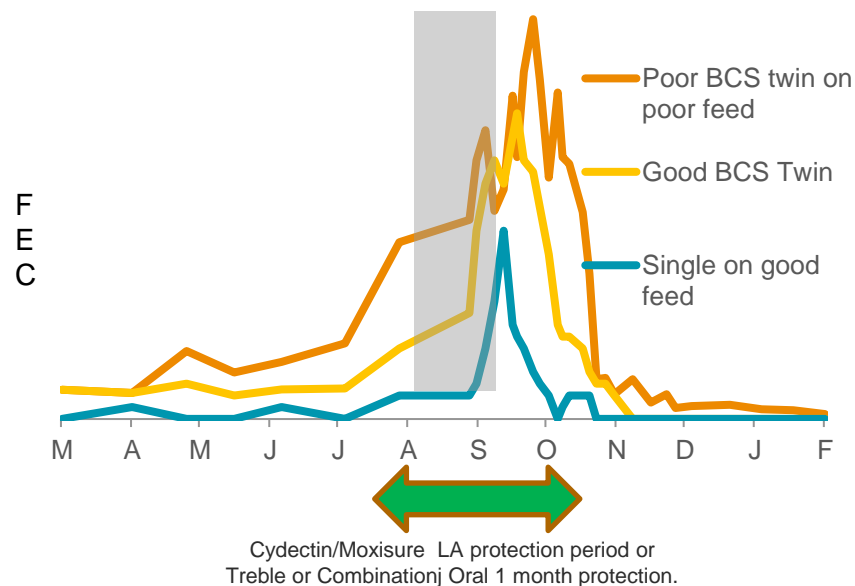
The ewe: Pre-lamb



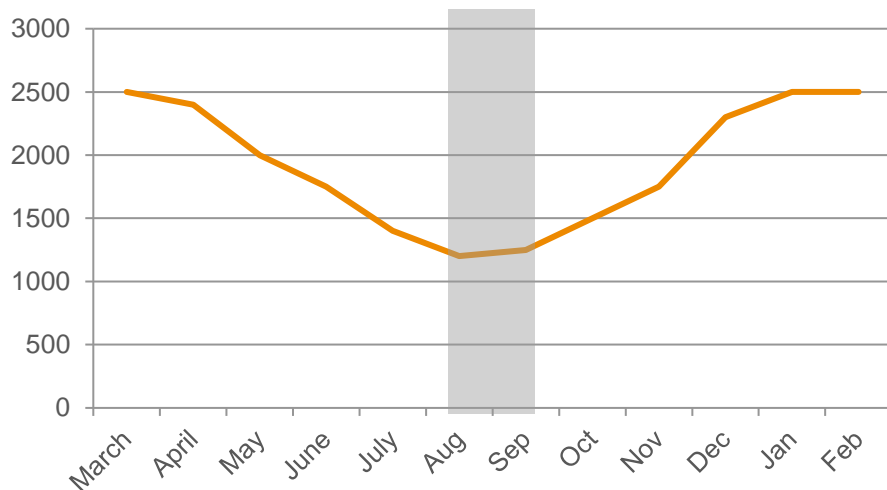
Schematic representation of the change in ewe weight during the year



FEC of different classes of ewes around



Predicted pasture cover graph



Effects of parasites on production

- Appetite reduced by 30%¹ post lambing
- Milk production decreases of 10-60%¹
- Slower growing, lighter lambs
- Wool production decreases of 30-40%¹
- Ewe live weight loss 1.7-3.3kg (periparturient period)

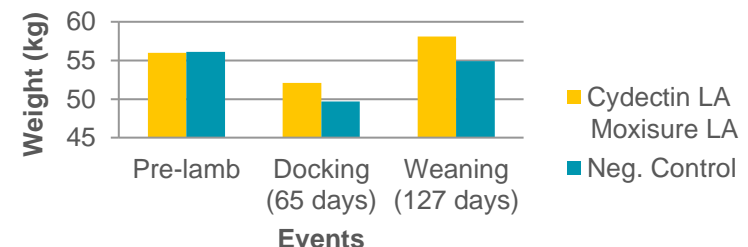
Trial work

	Average Response	Range in Response
Ewe weaning weight	+3.2 kg	1.79 to 4.88 kg
Pre-tup ewe weight	+2.5 kg	-1.8 to 4.5 kg
Av lamb weaning weight	+1.5kg	0.34 to 2.88 kg
Weight of lamb weaned/ewe treated	+2.1	-5.15 to 15.57

Dag score was reduced by CRC by 0.9 ($p < 0.001$), (95%CI = 0.75-1.08)²



Liveweight of ewes



1. Proc. Of the NZ Society of Animal Production, 1991, (51)
 2. Miller et al. (2015) New Zealand veterinary journal 63 (4): 211-219
 3. Bingham, C., et al. (2017). New Zealand veterinary journal 65(3): 152-155

Feed levels



Min 1200kgDm/ha (3.5 cm)



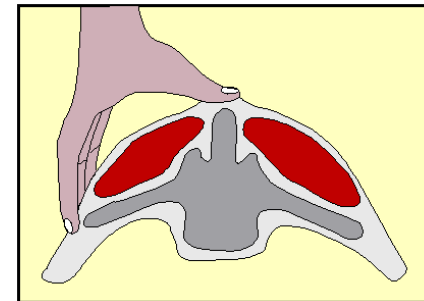
Multiple Vs Singles



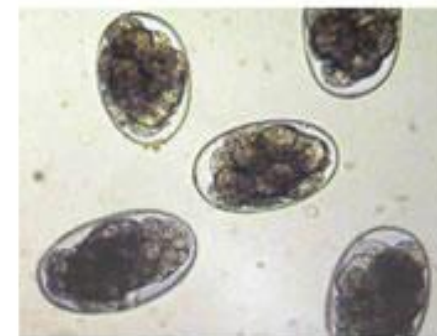
Fade Away for Scanning



Body condition



CS2.5 - 3

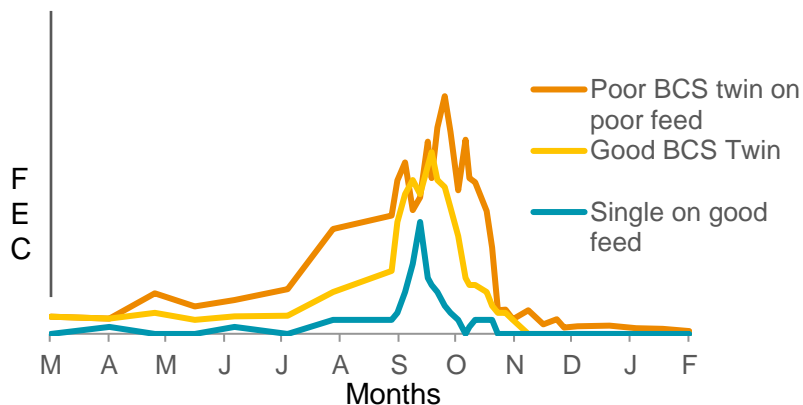


Pre-lamb FEC's

Should we treat and who to treat?

Likely parasite challenge

- Stocking rate
- Level of performance
- Feed levels
- Sheep/cattle ratio
- Young/old ratio
- Grazing patterns



What products could we use?

Long acting products



Medium acting products



Short acting products



No drench product

DRENCHING PRE-LAMB PLAN



Twin
bearing ewes

Single
bearing ewes

**Poor
conditioned
ewes**

Cydectin/Moxisure
Long Acting Injection
Treble or Combination
Oral Drench

Eweguard or
Cydectin Injection
Treble or Combination
Oral Drench

**Well
conditioned
ewes**

Eweguard, or
Cydectin Injection,
Treble or Combination
Oral Drench or Vaccine
only, as above

Vaccine only, as above

If using a drench with persistent worm control, use an **Exit drench** to knock out worms and help delay resistance.

Note: If applicable a single active wormer can be used such as Levamisole Gold or Mectin Sheep.

Mitigating risk of resistance

- **Refugia** Don't treat everything!

Treat the ewes as “groups” on an “as needed” basis

- Condition
- Single vs twins
- Age (hoggets, 2 toothed, MA ewes)
- Feed covers

- **Monitoring** (FEC at docking, ensure drench is working – Parascope Services)

- **Integrated grazing** (Cows or steers to decrease contamination)

- **Strategic drenching** (exit drenching)

Contact AHD Ltd for your drench supplies